

AWAKEN REAL BEAUTY
Custom Makeup Look



L'BRI
PURE n' NATURAL

INDEPENDENT CONSULTANT

For: _____

SKIN CARE

Trio >

FOUNDATIONS

Spring/Summer >

Fall/Winter >

CONCEALERS

Spring/Summer >

Fall/Winter >

CONTOUR/HIGHLIGHTS *(See application tips)*

BLUSH *(See application tips)*

POWDER

BROWS *(See application tips)*

EYESHADOWS *(See application tips)*

EYE LINER

MASCARA

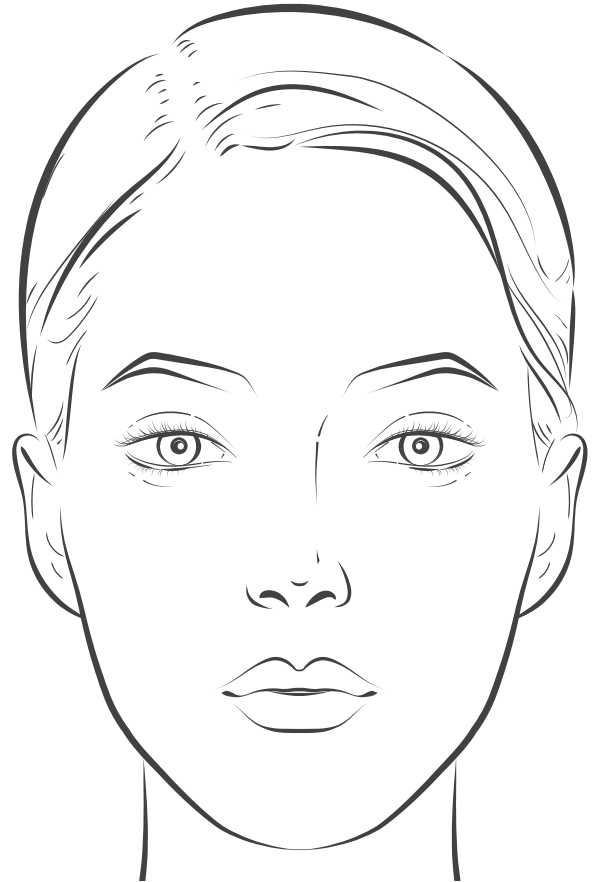
LIPSTICKS

LIP GLAZES

Your L'BRI Consultant: _____

Phone: _____

Email: _____



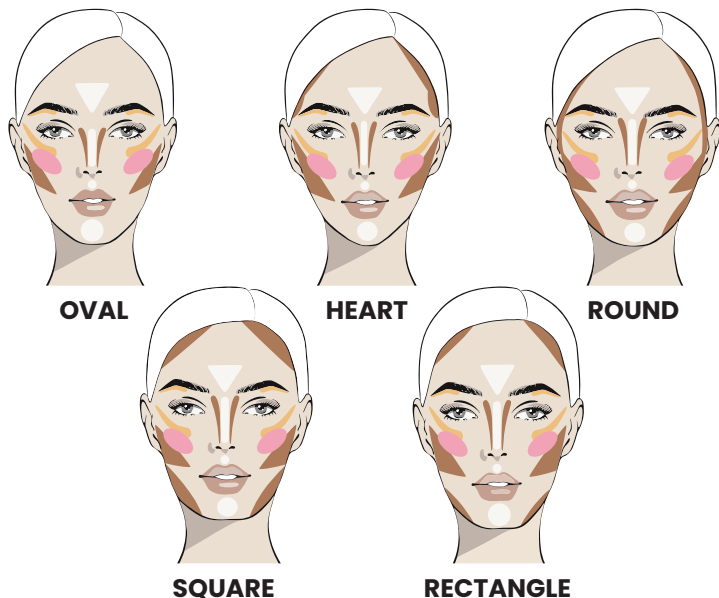
Great Additions!

- HYDRATING ANTIOXIDANT FACE MIST
- ERASE MAKEUP REMOVER
- FLAWLESS BLENDING SPONGE
- BRUSHES

Application Tips

CONTOUR/HIGHLIGHTS APPLICATION

1. Determine your face shape.



2. Apply **Contour** to areas indicated in *brown* using the angled end of the **Contour and Highlight Brush**. This will help downsize a large forehead, make the nose appear straighter and thinner, define cheekbones, and give the appearance of an angular jawline. Use the **Flawless Blending Sponge** to gently blend out any harsh lines creating a more natural look.
3. Follow the diagram and apply the **Highlight** indicated in *gold* to cheekbones and the outer edge of the brow bone to illuminate and brighten. Use the rounded end of the **Contour and Highlight Brush**.

DUAL BROW POWDER APPLICATION

1. Using the darker shade of your **Dual Brow Powder**, create a line below and above your eyebrows using the hard-angled brush tip of the **Eye Brow Brush with Spoolie**.
2. Using the hard-angled brush tip of the **Eye Brow Brush with Spoolie**, apply short, light strokes of the darker shade to fill in eyebrows from the arch to the tail.
3. Next, using short, light, upwards strokes, fill in the front of your brows with the lighter shade of your **Dual Brow Powder**.
4. Last, using the spoolie end of the **Eye Brow Brush with Spoolie**, blend upwards and over to pull color through for a natural-looking eyebrow.



BLUSH APPLICATION

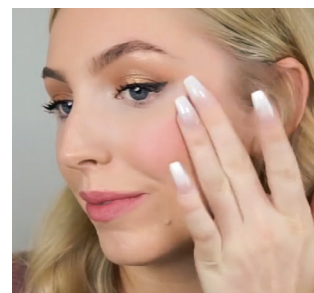
1. Reference the face shape chart to the left. The *pink* areas indicate the apples of your cheek for blush application.
2. If you're using the **Smooth Finish Mineral Blush**: Lightly sweep the **Powder Brush** through the blush compact and apply to the apples of your cheek, blending towards the hairline. For the most natural look, finish blending with the **Powder Brush**. Brush downward at the end of blending to allow your facial hairs to lie smoothly on your skin's surface.



-OR-

If you're using the **Cream Blush Stick**:

Apply onto the highest part of your cheek. Blend with fingertips upward toward hairline. To soften and blend the edges, use a dampened **Flawless Blending Sponge**. Cream blushes are buildable, so you can apply a second layer to give more color. It can also be applied to lips, eyelids and as a cheek highlighter.



EYE SHADOWS APPLICATION

1. Use a medium shade on the lid from the lash line to the crease.
2. Choose the darkest color and apply to the crease and the outer V of the eye.
3. Use the lightest color as a highlight on the upper eyelid and up to the eyebrow.
4. Apply a shimmer shade with your fingertip to the center of the eyelid.

